



Redefining comfort
with style

Beepee Group has been in the textile business for over 100 years and our guiding philosophy has been to provide our clients the best quality at a competitive market price. Our never ending search for excellence has resulted in us winning the world wide international BID award for quality control. We are a ISO 9001:2008 & Oeko-Tex Certified.

Beepee Group's vast clientele includes big names from hospitality industry, which includes major luxury and deluxe hotels, hospitals and major Airlines, Cruise Liners & Premium Hospitals. We are one of the largest suppliers of Bed, Bath & Table Linen to these institutions. Apart from this, we also manufacture Uniform fabric, Curtains, Duvets that reflect quality.



Here is what we are for





OUR RANGE FOR BED

Mattress Protector
 Duvet
 Pillow
 Cushion
 Bolster
 Bedsheet
 Duvet Cover
 Pillow Cover
 Cushion Cover
 Bolster Cover
 Bed Runner
 Bedside Mat

Hotels



Bed

Bath

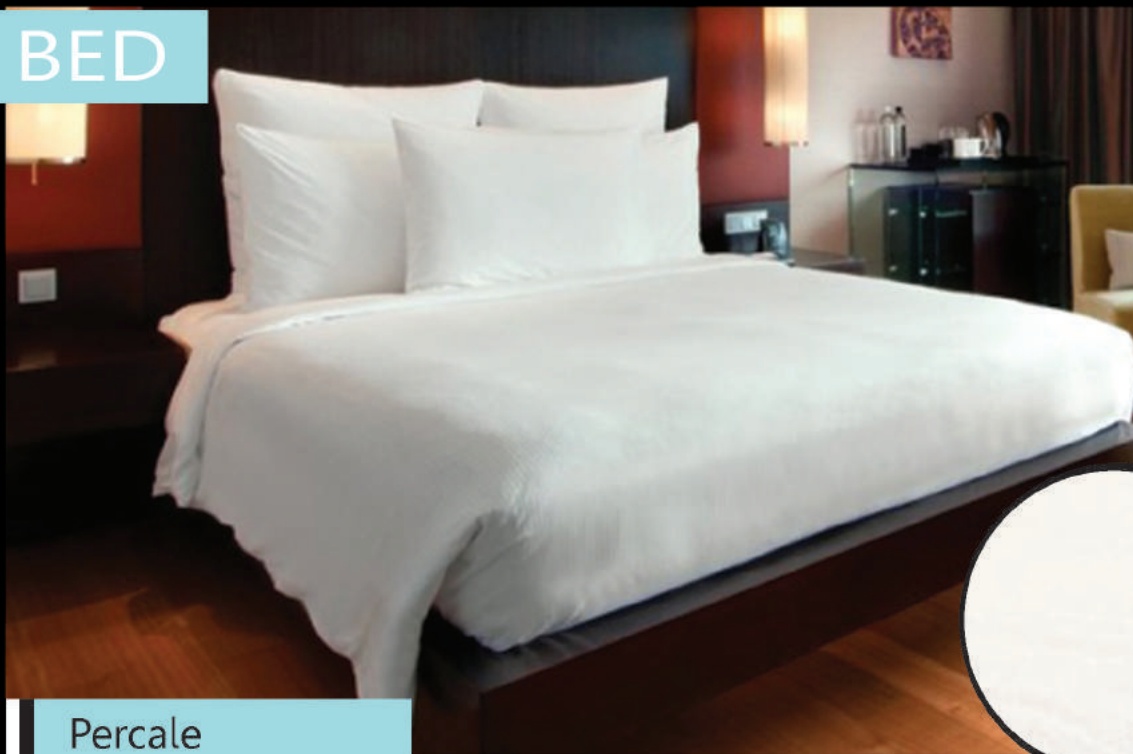
F&B

Airlines

Cruise

Hospitals

BED



Percalé

Beepee Recommends 100% Cotton Percalé Quality For Bed Sheets

Economy: 20's / 140 Gsm

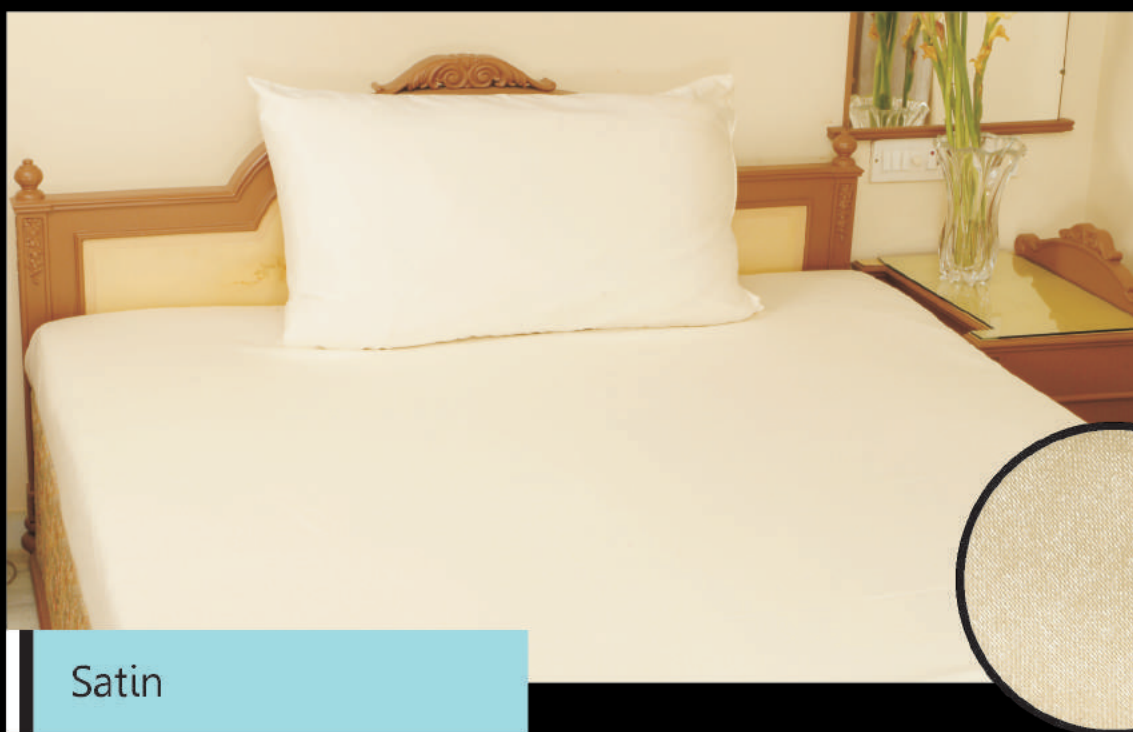
Medium: 30's / 140 Threadcount

Superior: 40's / 200 Threadcount

Deluxe: 60's / 300 Threadcount

Super Deluxe: 60's / 400 Threadcount

We Always Recommend Percalé Or Plain Weave So That It Is More Durable And Takes Better Body Abrasion



Satin

Mainly used for Duvet covers & pillow covers. soft luxurious feel

Available in 220Threadcounts, 300 Threadcount, 400 Threadcount upto 1000 Threadcount



2mm

Satin stripe in 2mm stripes

100% cotton

Made to order



5mm

Satin stripe in 5mm stripes

100% cotton in 250 TC & 300 TC

Made to order

Bed

Bath

F&B

Airlines

Cruise

Hospitals

BED

1cm

1 cm strip (10mm)
Most Popular design in 100% cotton & CVC blends
220, 250 & 300 threadcount
Other Qualities Made to Order

25mm

25mm (1" stripe)
Available in 200 Threadcount & 300 Threadcount & 180 GSM Quality
other Qualities Made to Order

Micro Checks

100% Cotton in 350 Threadcount

Karo Checks

100% Cotton. Available in 250 Threadcount

Bath

F&B

Airlines

Cruise

Hospitals

| LUXURIOUS DUVET COVERS 400 TC 'N' SERIES |

- ▣ This is exciting product to breakaway from the Monotonous Duvets Covers of Traditional Kind.
- ▣ The quality is Excellent and has super soft feel in 100% cotton
- ▣ The Guest shall feel heavenly and will feel Indulges in Luxury

BED



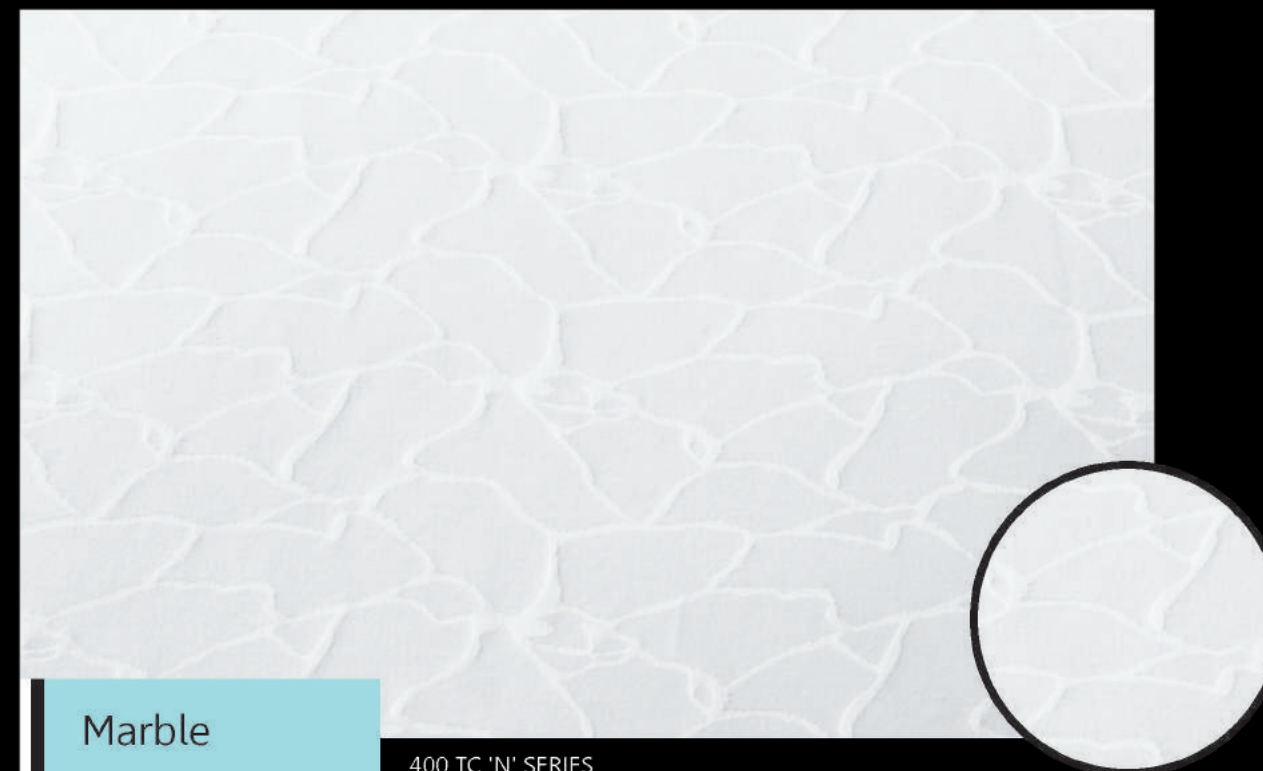
Fret

400 TC 'N' SERIES



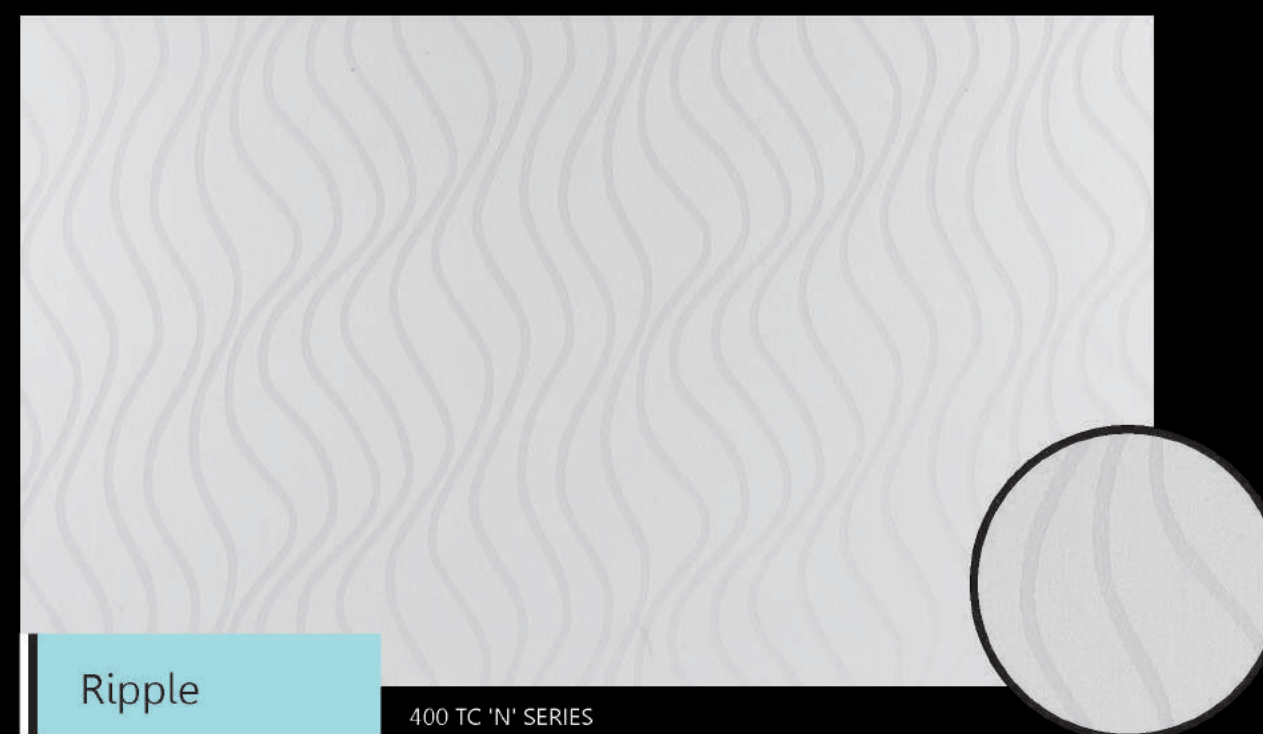
Rsa

400 TC 'N' SERIES



Marble

400 TC 'N' SERIES



Ripple

400 TC 'N' SERIES

Bath

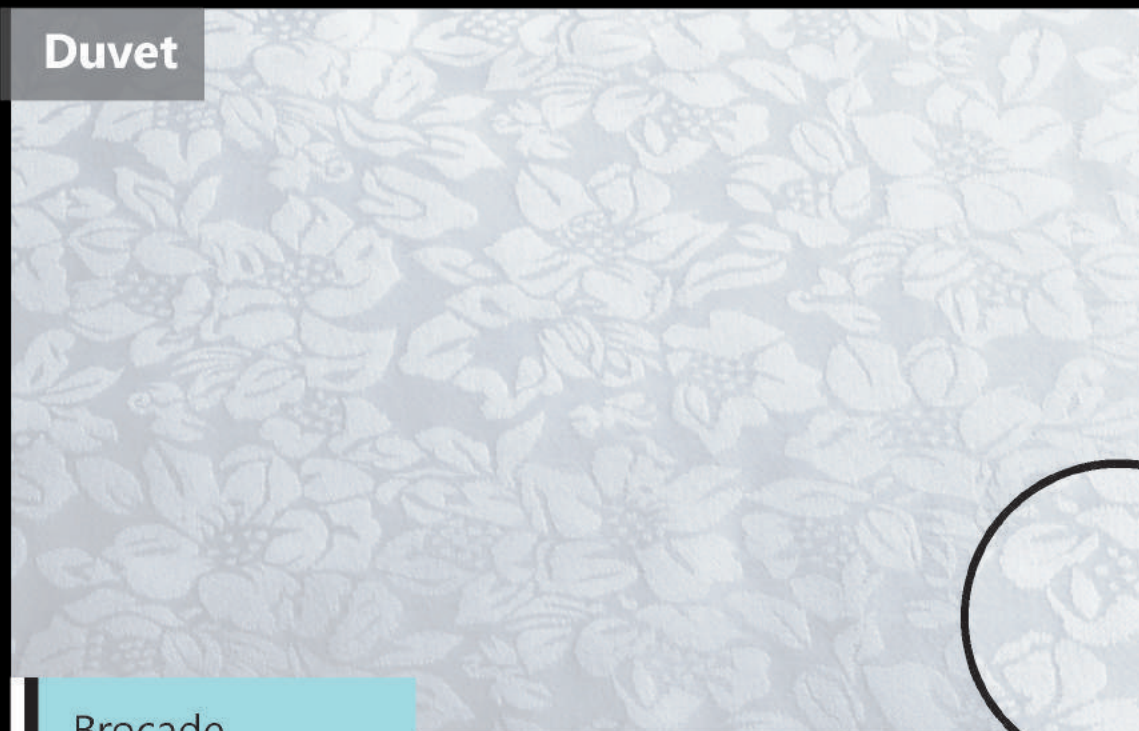
F&B

Airlines

Cruise

Hospitals

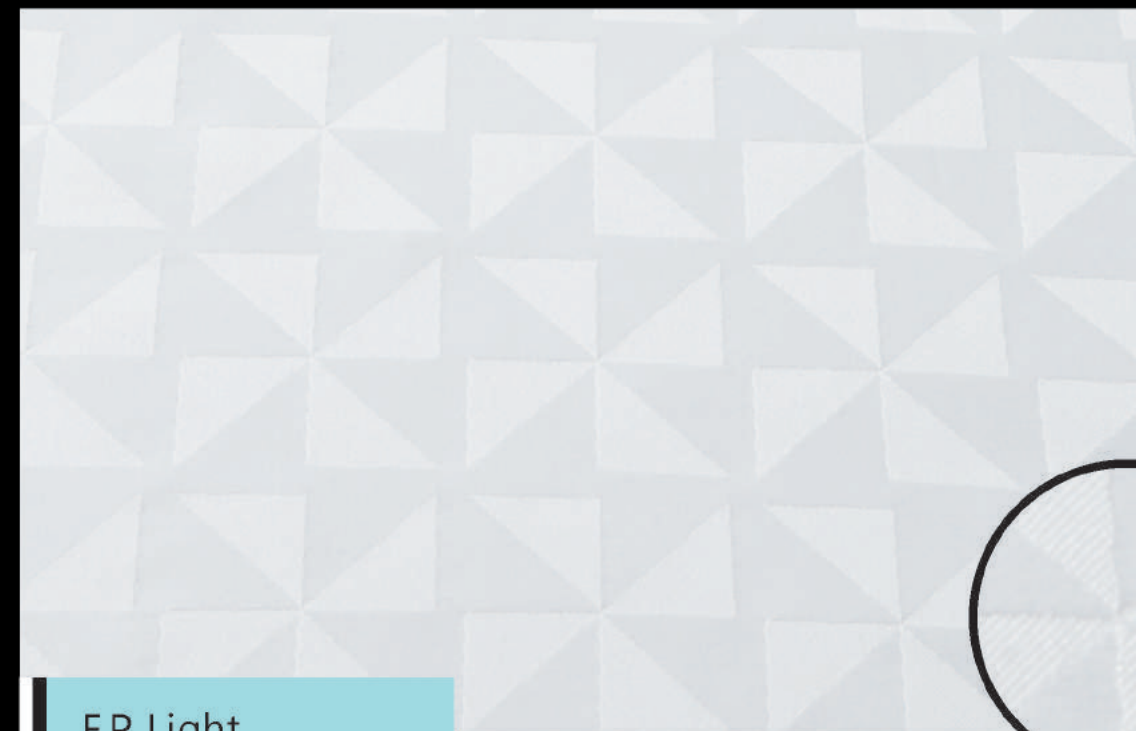
Duvet



Brocade

400 TC 'N' SERIES

Luxurious Duvet Cover 400 TC.



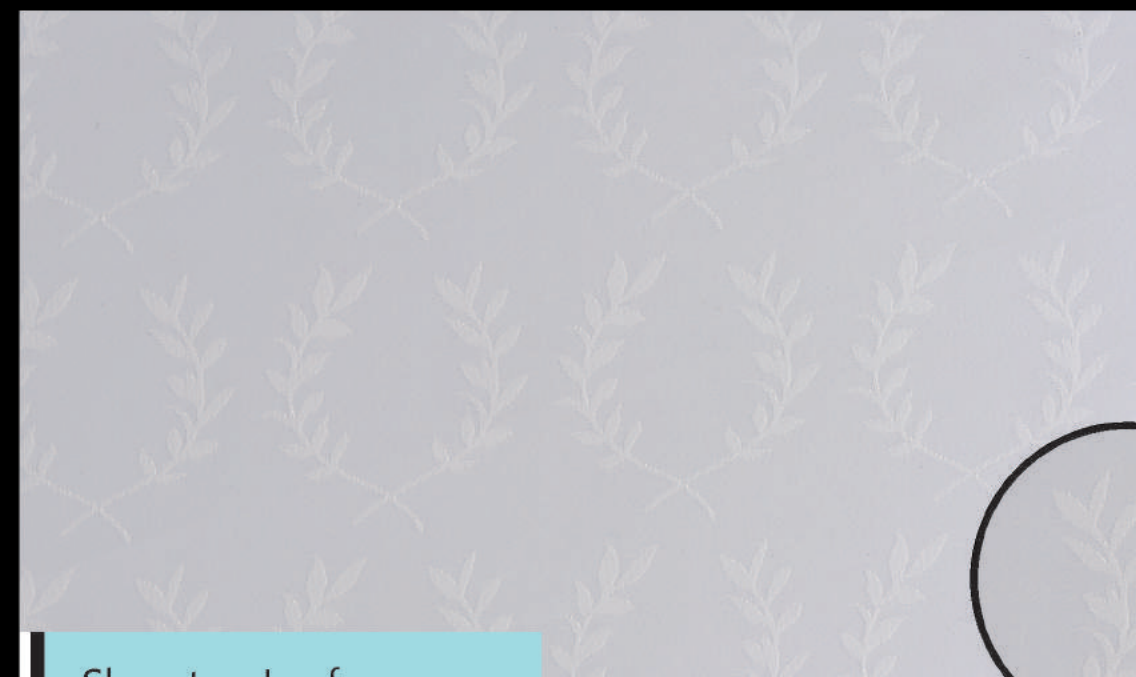
F.P. Light

Made to order Item as per Specifications or Brand Standard Four Points
100% Polyester



MB Flower

400 TC 'N' SERIES



Sheraton Leaf

Made to order Item as per Specifications or Brand Standard
100% Polyester

Bath

F&B

Airlines

Cruise

Hospitals



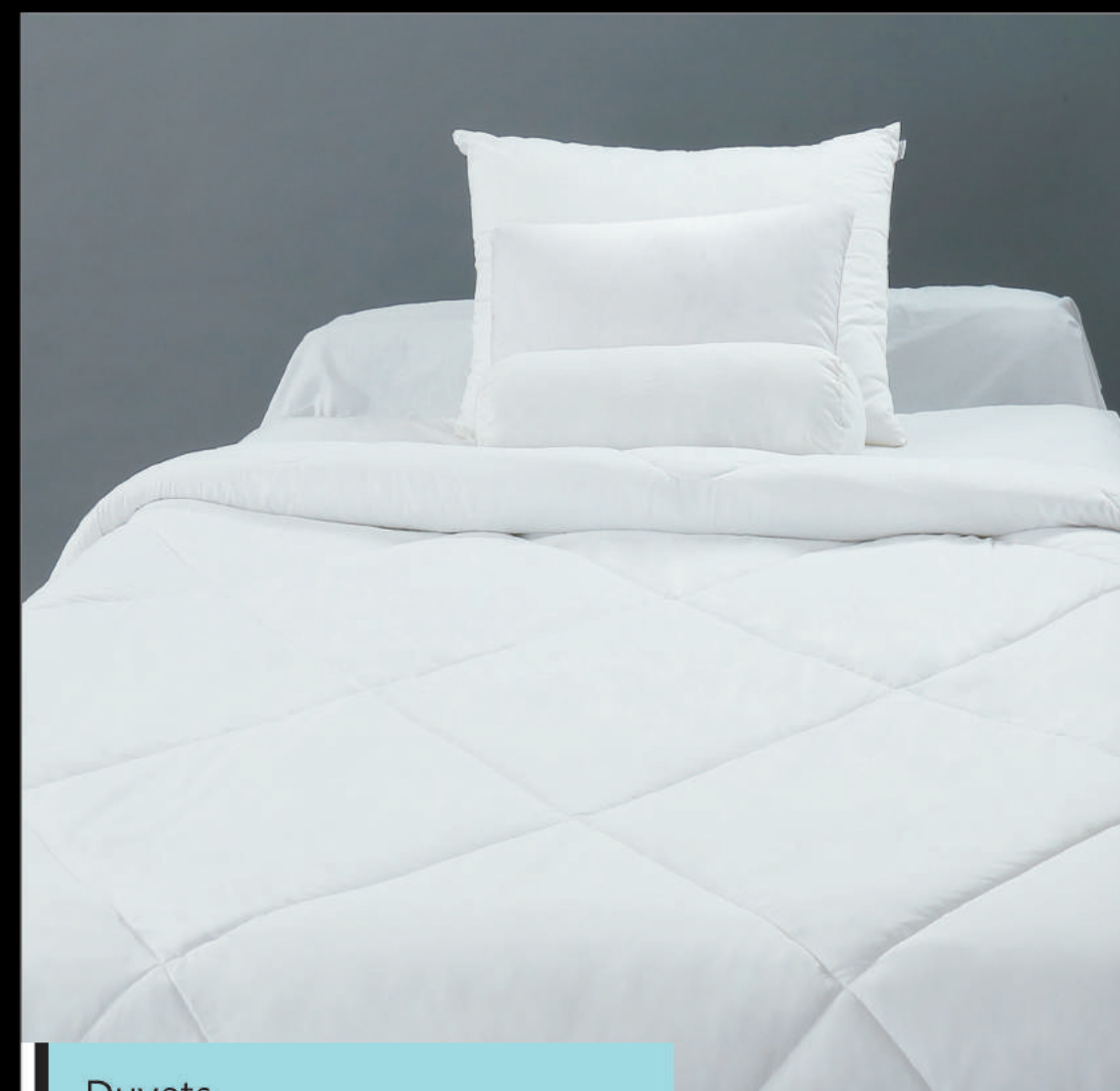
Pillows | Cushions | Bolster

We use 100% virgin hollow Siliconised Fibre.

PILLOWS: Available in Standard 18" x 27" 825 gsm. And 20" x 30" 1000 gsm.
Other specifications – Made to Order.

CUSHIONS: STANDARD 16" X 16" – 325 gsm.

BOLSTER: Made to Order.



Duvets

100 % Cotton or Micro Fibre Peach Finish Cover and inside 250 to 350 gsm of SSHF wadding for extreme guest comfort.

Bath

F&B

Airlines

Cruise

Hospitals



Mattress Protector

Beepee's Mattress Protector comes with the micro-peach finish top 150 gsm of filling and spill proof backing with all four sides' fabric covering to protect the entire mattress. This product is durable, washable and genuinely protects your mattress completely.

Common sizes

Twin - 39 x 72" (100 x 180 cm)

Full - 54 x 75" (135 x 180 cm)

Queen - 60 x 78" (150 x 200 cm)

King - 72 x 78 inches (180 x 200 cm)



Topper

Used to enhance the height & comfort of the mattress. Normally 3" in height. Customised sizes



Bed Runner

Customized as per Interior



Good Night Mat

Bath

F&B

Airlines

Cruise

Hospitals



OUR RANGE FOR BATH

Bath Towel
Hand Towel
Face Towel
Bathmat
Pool Towel
Spa Towel
Public area Napkin
Bathrobe
Kimino (Yukata)

Bath

GroupTM has been in the textile business for over 100 years and our guiding philosophy has been to provide our clients the best quality at a competitive market price. Our never ending search for excellence has resulted in us winning the world wide international BID award for quality control.



Bath

F&B

Airlines

Cruise

Hospitals

| Towels |

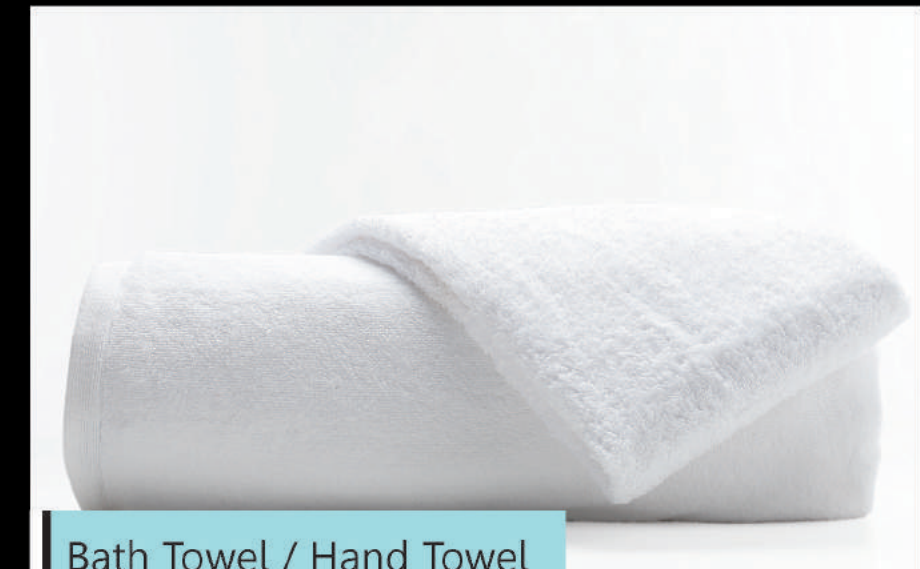
Our towels are woven on latest technology air jet looms using high quality yarns processing is done on soft flow machine with reinforced borders as standard for optimal performance
We make our towel without headers complete terry to terry to give you maximum look and life as the same avoids differential shrinkage Items

ITEMS	SIZE (INCH)	SIZE (CMS)	GSM 630	GSM 550	GSM 425
Bath Sheet	40x80 36x72	100x200 90x180	1000*	1100* 900*	
Bath Towel	30x60 27x54	75x150 70x140	730* 600*	650* 550*	500* 425*
Hand Towel	20x32 18x27 16x24	50x80 45x68 40x60	250* 190*	220* 170* 135*	
Wash/Face	12x12	30x30	60*	50*	40*
Bath Mat	20x30	50x75	800 GSM→ 1000 GSM→	300GMS 350GMS	

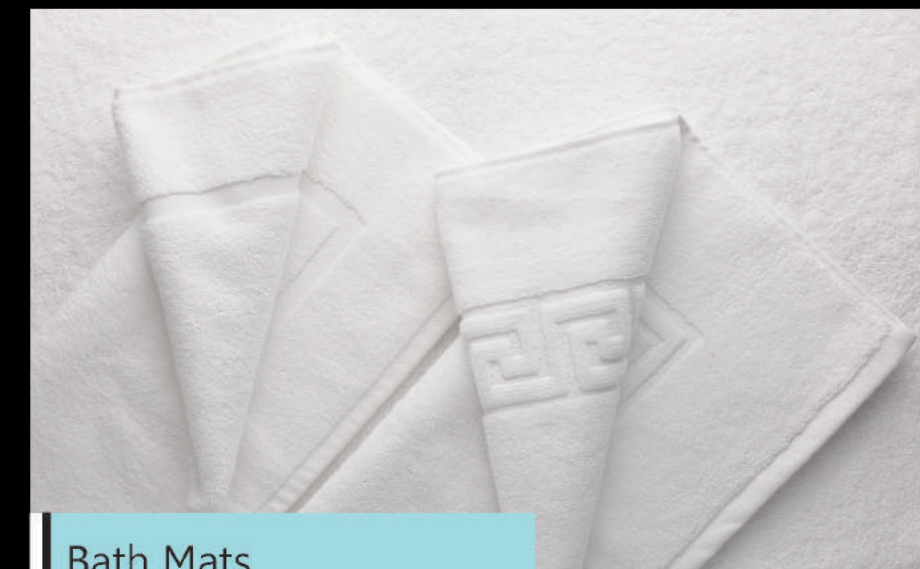
*Weight per pc in GMS



Embroidery



Bath Towel / Hand Towel



Bath Mats



Jacquard Towel



H.D.Towel

F&B

Airlines

Cruise

Hospitals



Pool Towel

36" x 72" (90cms x 180 cms) in 750 gsm
& 1000 gsm

Available in following colours:

Coco	Orange	Green	Yellow	Blue	Beige
Vanilla	White	White	White	White	White



Also available in solid colours

Customised Colour Towels available in 36" x 72" (90cms x 180 cms) or 30" x 60 " (75 x 150 cms)



Staff Towel

Available in colours to differentiate from guest towels
& Staff towels – Size 27" x 54" (70 cms x 140 cms)



Spa Towel

Bath Robe



Terry:
Traditional Bath Robe from 360 Gsm
to 450 Gsm



Terry Waffle



This unique In House Developed Product gives unmatched performance. Single Fabric that's even in shrinkage and performance that the comfort of Terry on the Inside for high absorption of water on the body and great look of Waffle on the outside. Can also be personalised by Embroidering your Name / Logo on the Front pockets.



Yukata Kimino



F&B

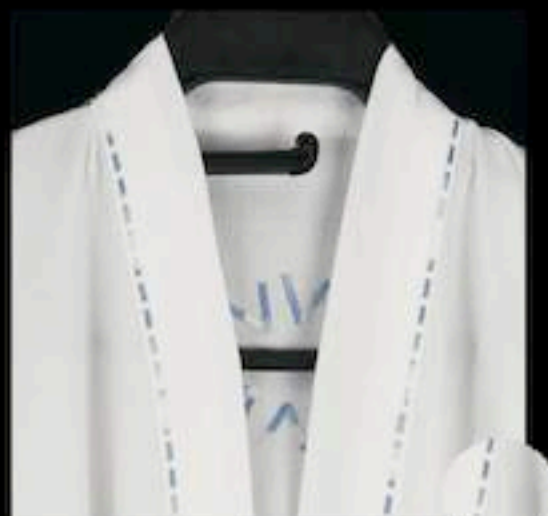
Airlines

Cruise

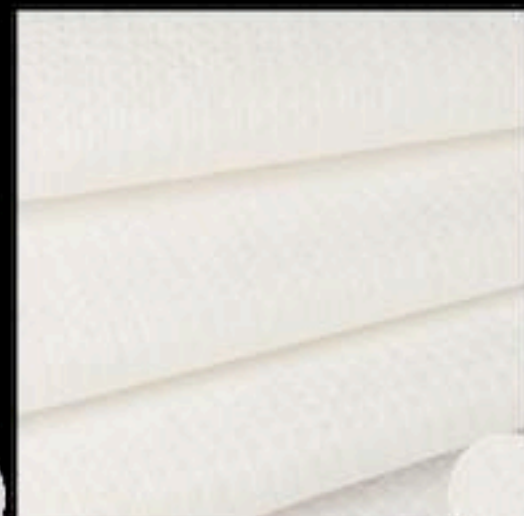
Hospitals



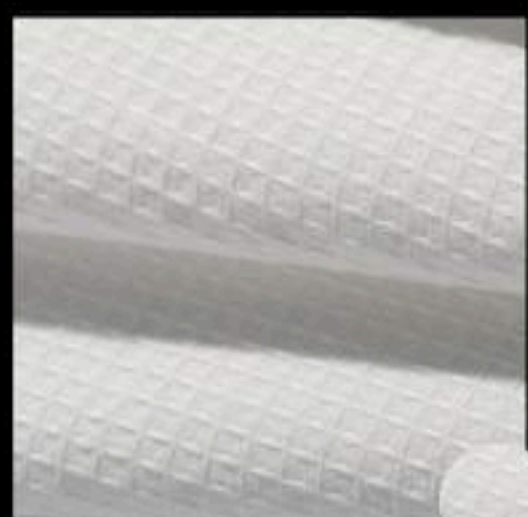
Heavy Waffle



Micro Waffle



New Waffle



Medium Waffle

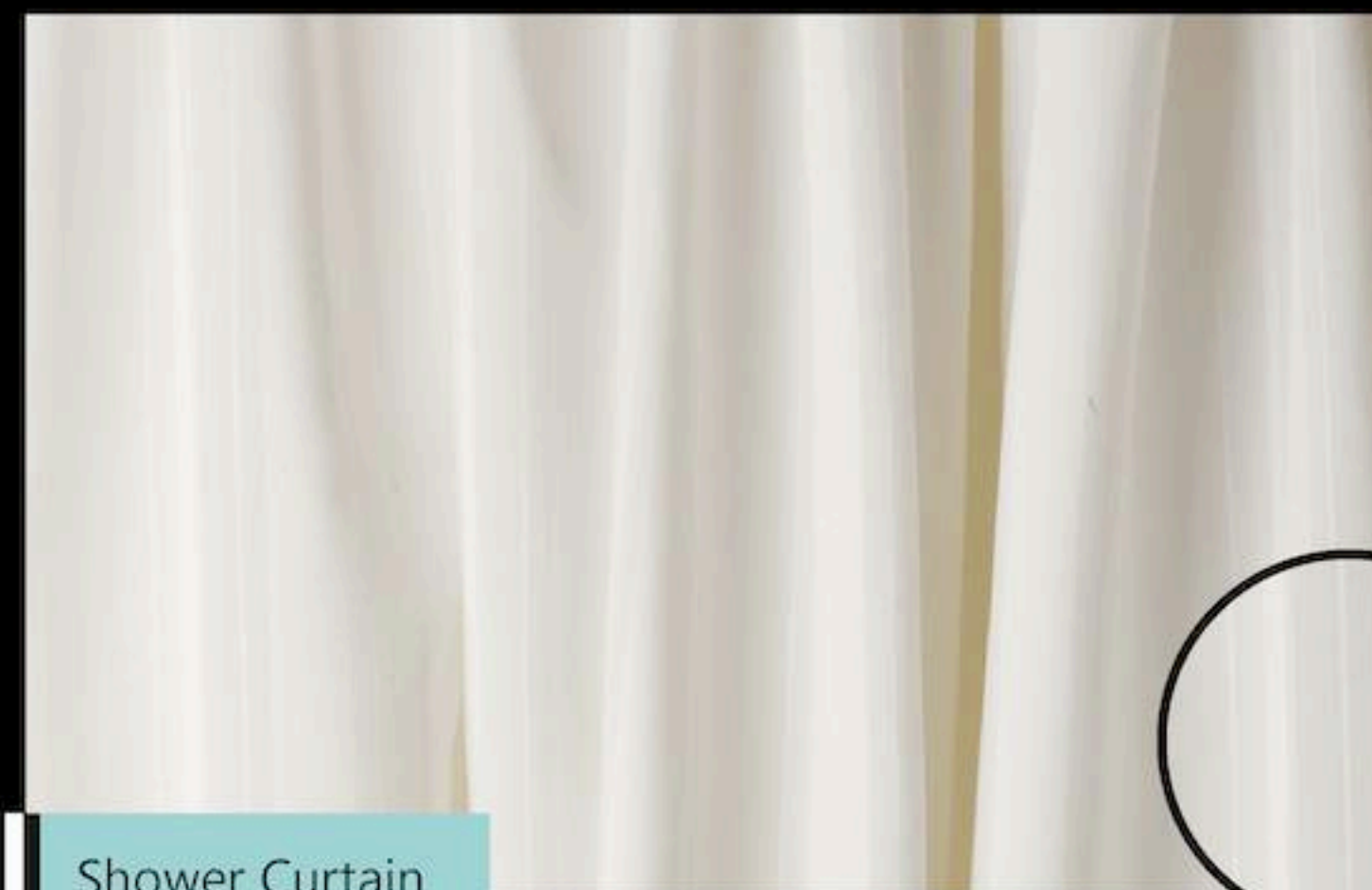


Micro Cord

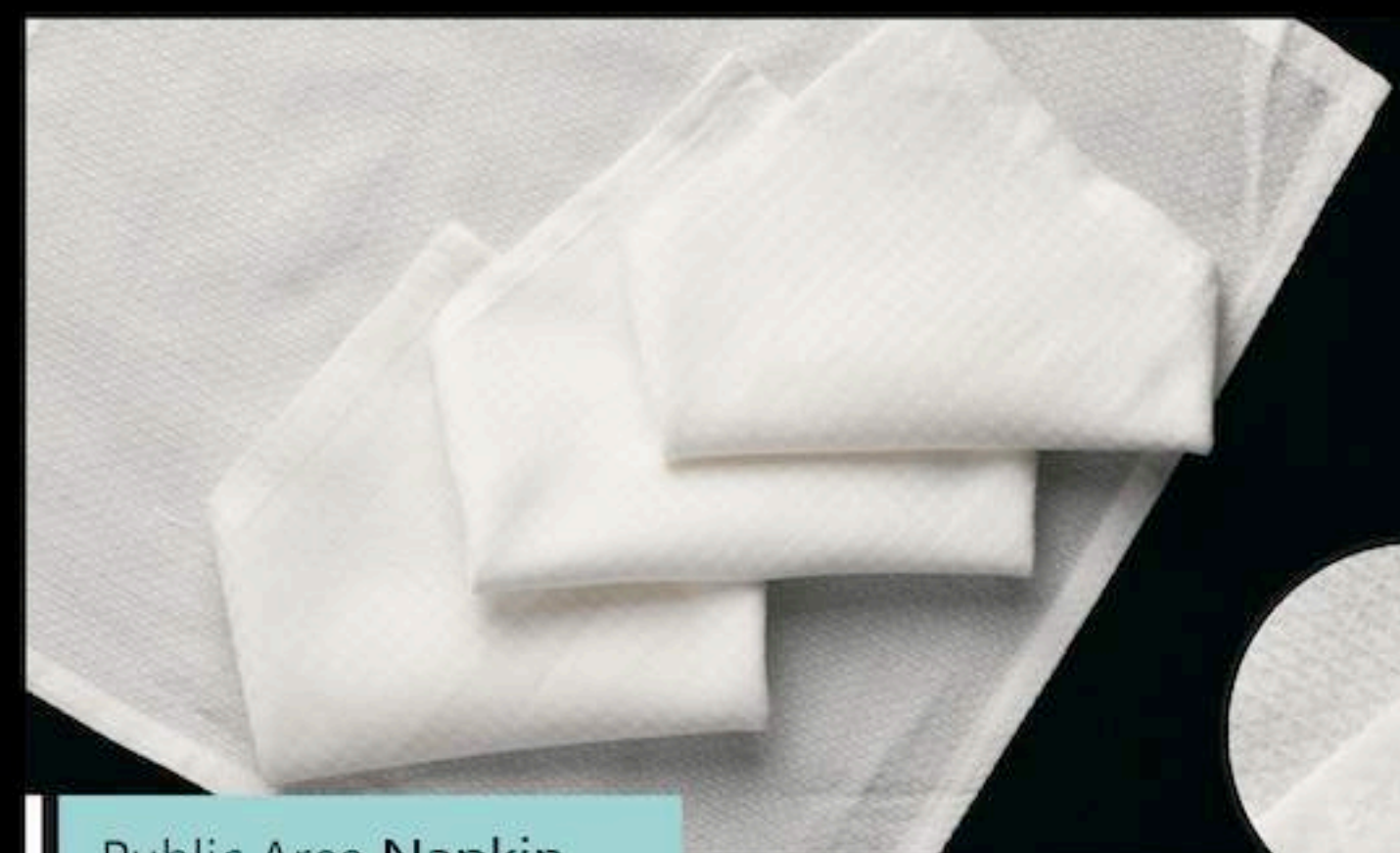


Terry

Waffle:
100% Cotton to give you excellent look
and lower product and washing cost



Shower Curtain



Public Area Napkin

F&B

Airlines

Cruise

Hospitals



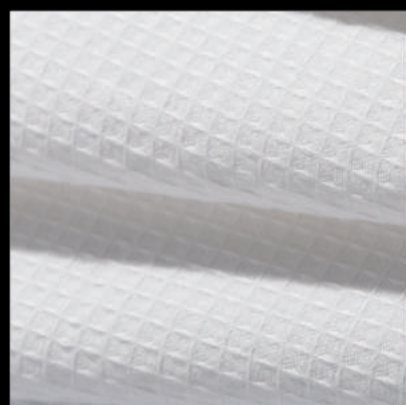
Heavy Waffle



Micro Waffle



New Waffle



Medium Waffle



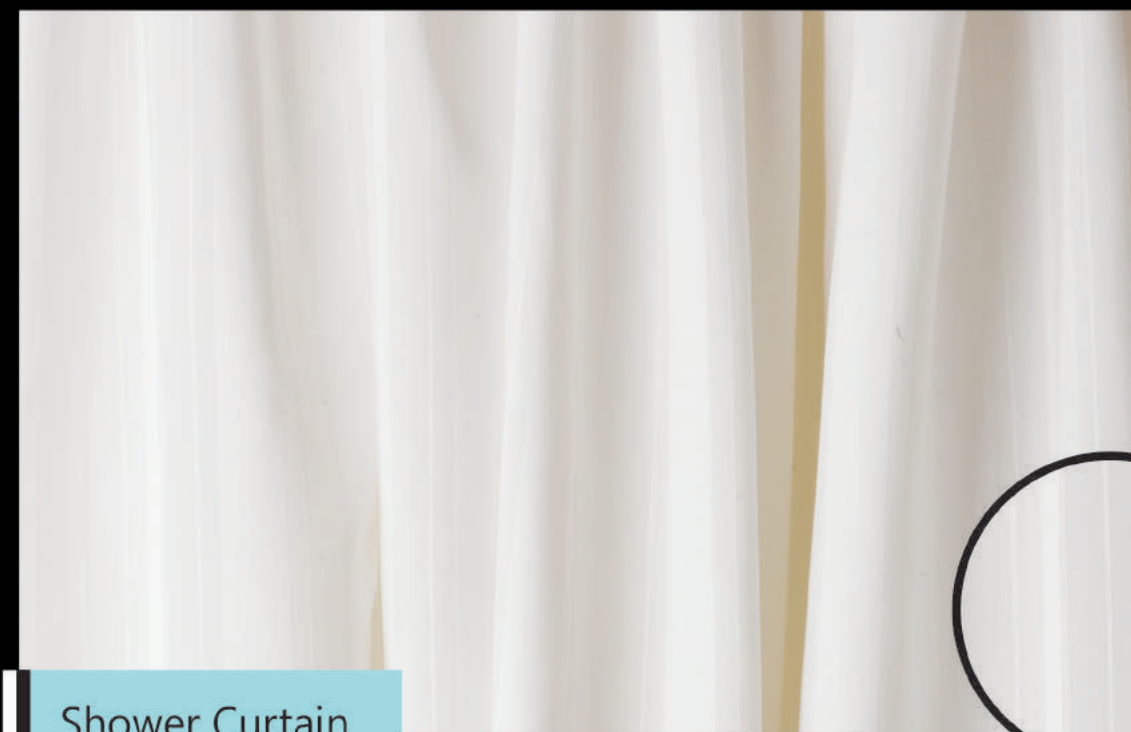
Micro Cord



Terry

Waffle:

100% Cotton to give you excellent look and lower product and washing cost.



Shower Curtain



Public Area Napkin

F&B

Airlines

Cruise

Hospitals



Food & Beverages

OUR RANGE FOR F & B

- Napkins
- Underlay
- Overlay (Napron)
- Runner
- Chair Cover
- Tray Mats
- Moulton
- Frill / Skirting
- Stage Skirting
- Drop downs





Beepee Group is proud to present to you the revolutionary new fabric Beepee Grace Which has changed the face of the hospitality Industry.

It is A NEW AGE FABRIC WHICH RESOLVES AN AGE OLD CONFLICT

- Durability versus softness
- Color fastness versus Absorbency
- Soil release versus Pilling performance





The choice was an either or proposition. For one set of characteristics use polyester, and for the other cotton. With the introduction of Beepee Grace choice has become even simple - one fabric that satisfies all demands.

Recommended Uses:

- | Table Linens
- | Serviettes (Napkins)
- | Aprons
- | Work wear Garments
- | Overalls/Coveralls
- | Delivery Uniforms
- | Kitchen/Chef Wear
- | Chair Covers
- | Duvet Covers
- | Sheets
- | Pillowcases



Analysis

	Strength	Weakness
 Cotton	Soft hand (feel) Absorbent Traditional	Difficult to Process Fades Easily Lasts only about 60-80* washes Launderings Hazards Poor Shrinkage Lints
 Blends	More durable then Cotton Less Fading than Cotton	Cotton washes out Leaving shiny polyester Life of 120-140* Washings Fading Shrinkage Lints Poor Appearance
 Filament Polyester	Colorfastness (Resist Fading) Easy Processing Good Durability Good soil release 200 + washes*	Poor hand (softness) Poor absorbency Picks and snags Its unpleasant Appearance
 Grace The Magic Fabric	92% as absorbent as cotton Feel and look of cotton & blends Durability of filament polyester Color fastness of filament polyester Will not lint or shrink like cotton or blends Will not pick or snag like filament polyester Excellent soil release Easy laundering Inherent stain resistance properties 200 + washes*	Cannot be washed with cotton

*under normal water washing conditions

F&B

Airlines

Cruise

Hospitals



Grace Palladium

190 GSM



MAROON COFFEE BLACK WHITE

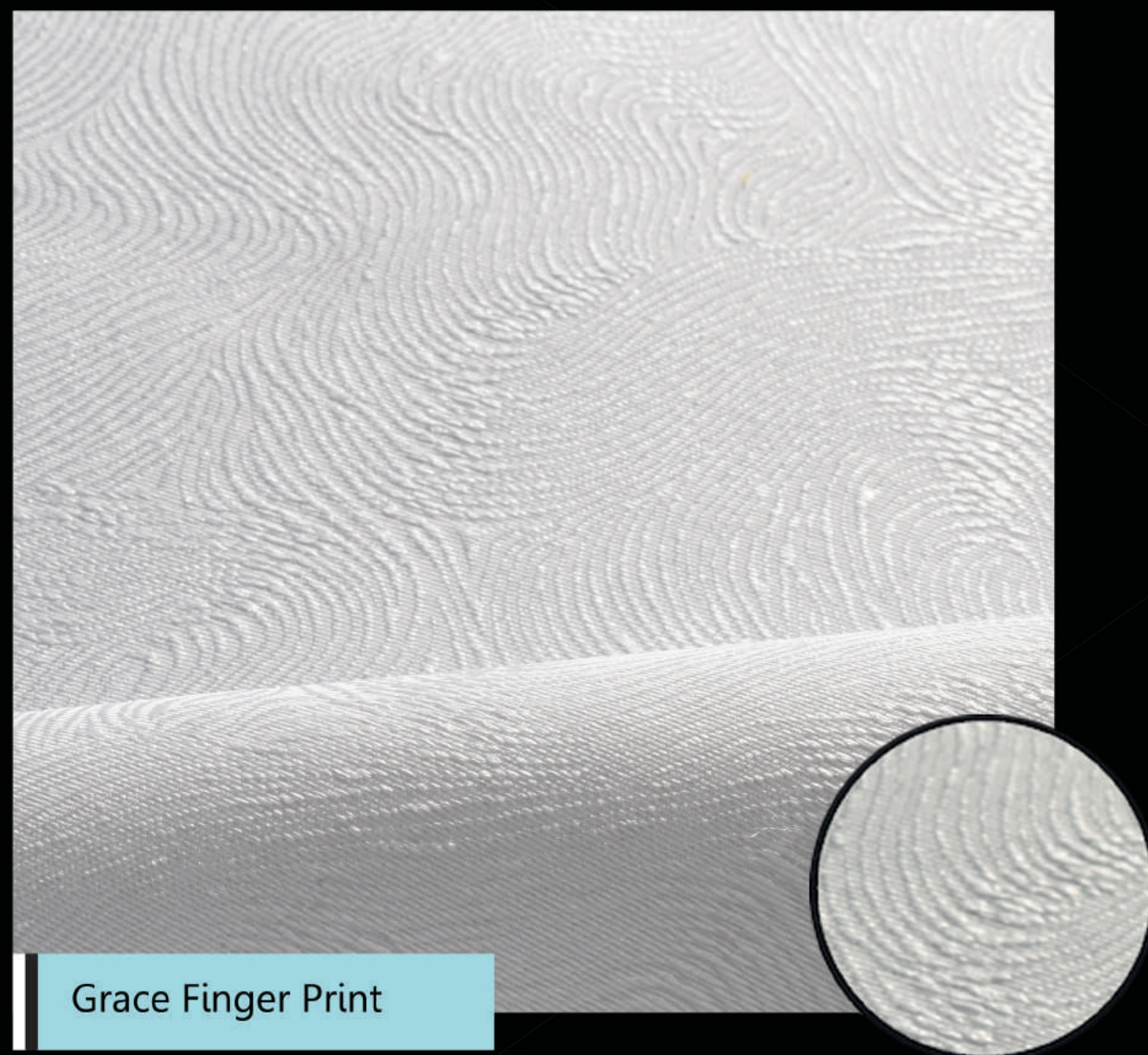


Grace Splendor

240 GSM



GREEN BURGUNDY IVORY BEIGE WEDGEWOOD PISTA FOREST LIGHT GREY
NAVY WHITE BROWN GREY BLACK



Grace Finger Print

240 GSM



Grace Scallop

240 GSM



Grace Lineras

240 GSM



Airlines

Cruise

Hospitals



Grace Sparkle

240 GSM



Grace 3D

240 GSM



Grace Ivy Leaf



Rose

240 GSM





Grace Moughal

240 GSM



Grace Royalty

240 GSM



Grace Clouds

240 GSM



Grace Big Brocade

240 GSM



Rhombus Leaf



Grace Elegant

150 GSM



Veltouch



Grace Paisly

240 GSM



Mosaic



Real Paisley

100% Polyester 180 GSM



Brocade Rose



Arrowjoile



DARK PINK



GOLD RUST



PINK



MEHINDI



PEACH



SILVER GREY



PURPLE



IVORY



GOLD BROWN



COFFEE



FL Flower



Taj Net



FL Weaves

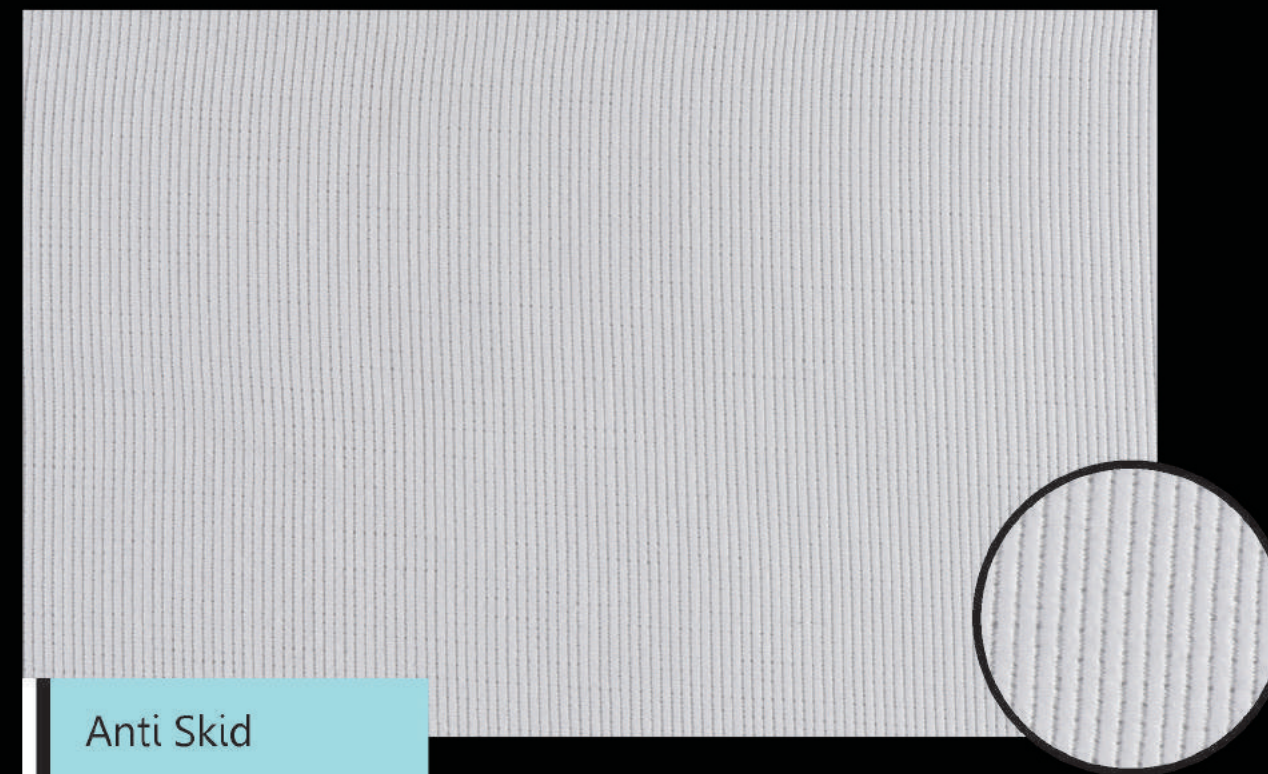


FLS





Valentine



Anti Skid



WHITE



BROWN



BLACK



Gizmo



Runner/ Place Mat



Wow

175 GSM

FRONT



GOLD CREAM CHOCOLATE L.BLUE GOLD SILVER

BACK



RUST SAND BLACK D.BLUE BURGUNDY BLACK



Ivy Leaf



All Over French Window



BD Rose



All over Diamonds

100% Cotton 225 GSM



All over RSA



All Over Checks

100% Cotton 225 GSM



Jungle

100% cotton



Royalty



100% cotton



Plain Damask

Plain Damask in 120 In (300 CMS)

Grace
Grace Plus - 205 GSM
Grace Satin - 240 GSM

Poly Cotton
230 PC - 225 GSM

Cotton
3010 - 210 GSM
230 - 225 GSM
Beepee Fine - 225 GSM
Super Heavy - 300 GSM

Polyster
BEEPEE Satin - 250 GSM
Glassy



NAPKIN



Grace Satin Band

Grace Satin Band by beep group shows the bridge between traditional style and latest technology

The Evergreen design is recreated in the magic fabric of grace

Weight : 240 Gsm

Size: After wash 21" x 21" (53cms X 53cms) 240 gsm

18 x 18 (45cms X 45cms) 210 gsm

12 x 12 Cocktail Napkin

Is available in the following colors



NAVY BLUE



GOLD



RUST



LIGHT BLUE



BURGUNDY



IVORY



FOREST GREEN



WHITE



RED



ORANGE



BEIGE



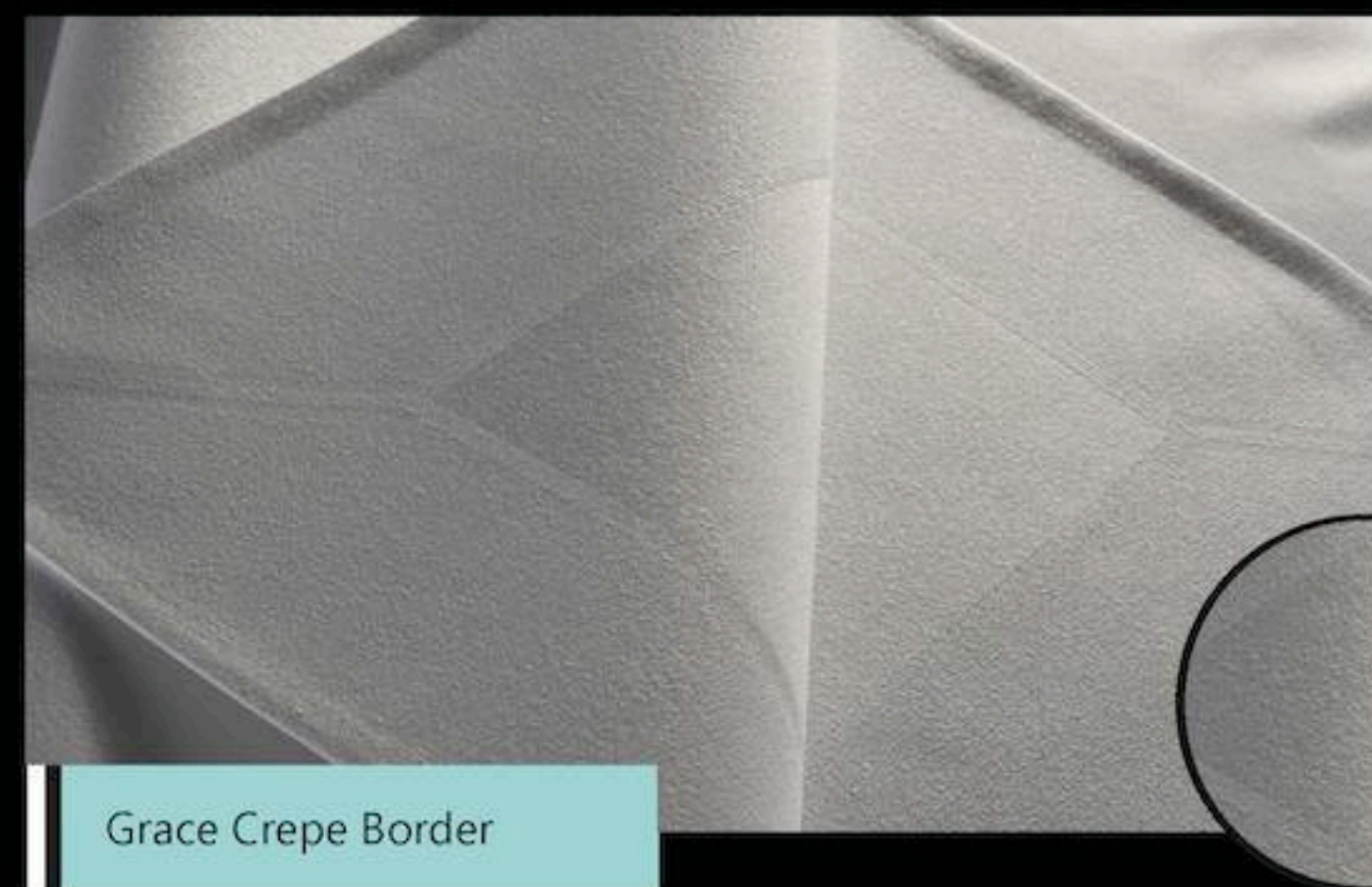
MINI GREEN



BLACK



Grace Grid



Grace Crepe Border



Grace Mirchi



Grace Forest

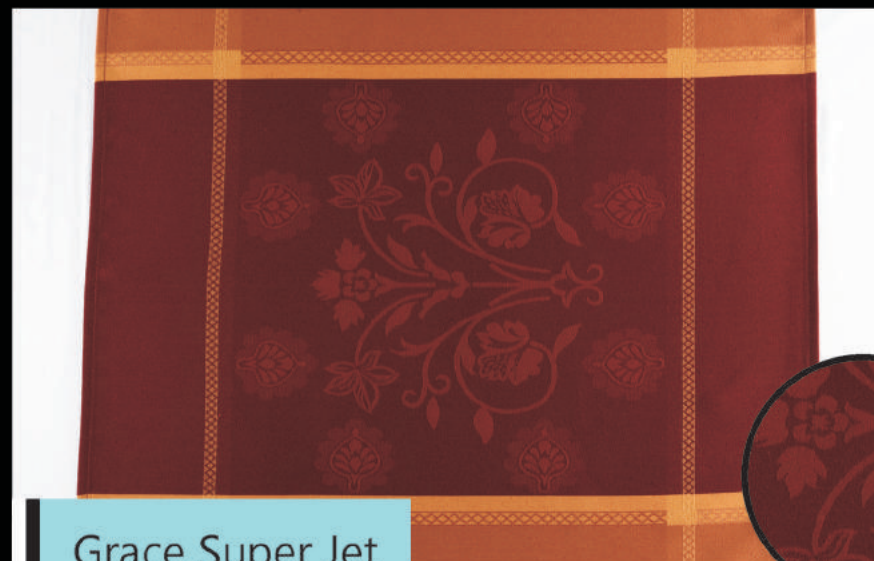


Grace Coin



Grace Shell





Grace Super Jet



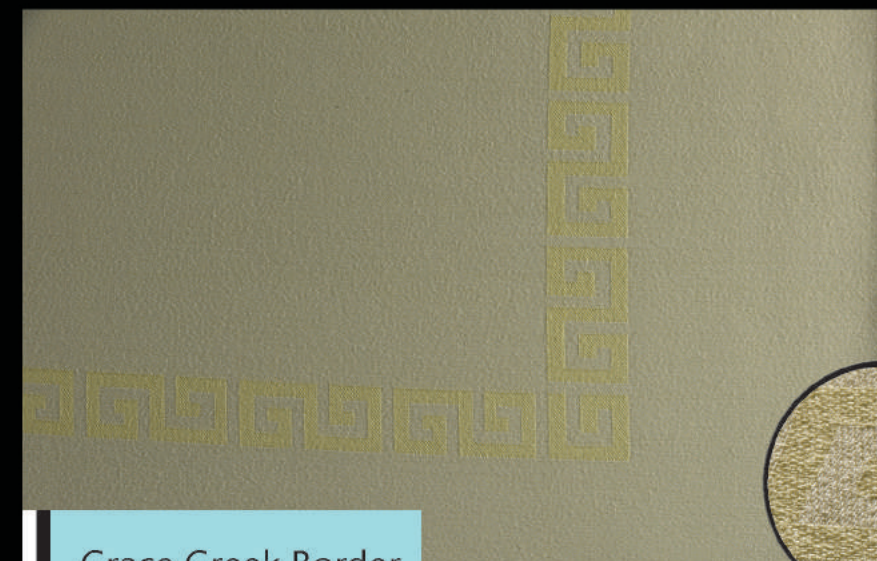
Grape Wine Grey



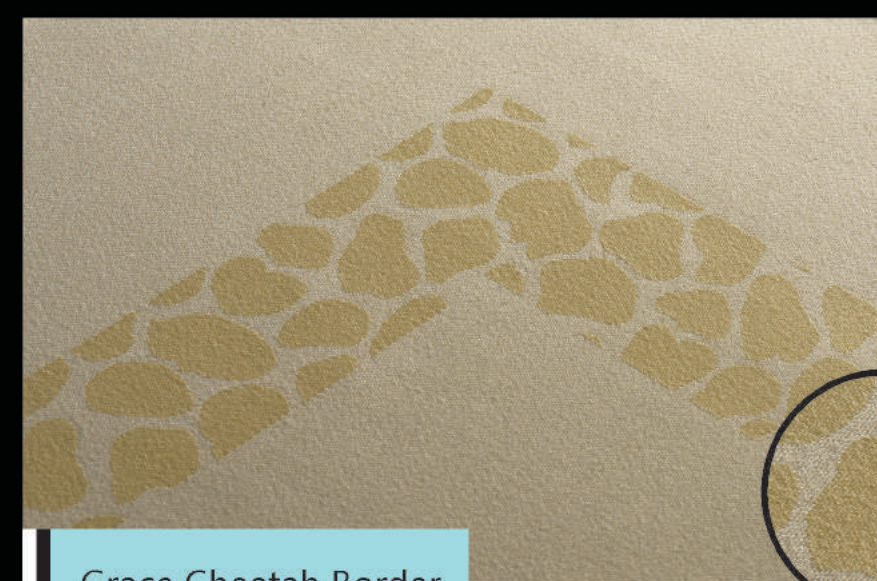
Grace Feather Border



WHITE



Grace Greek Border



Grace Cheetah Border



Grace Lemon Dot

COTTON



SATIN BAND NAPKINS

This evergreen design is recreated in three different Quantities

Economy - 175 GSM

Regular - 225 GSM

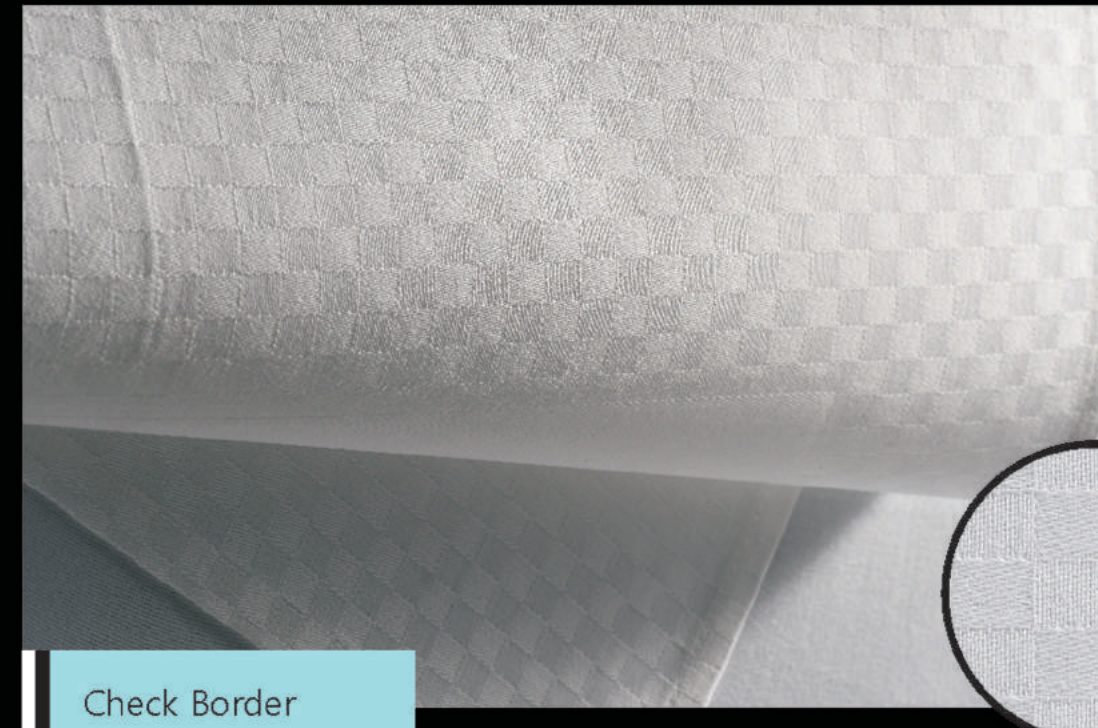
Heavy - 250 GSM

100% Cotton



Diamond Border Napkin

100% Cotton



Check Border

100% cotton



RSA Border

100% cotton



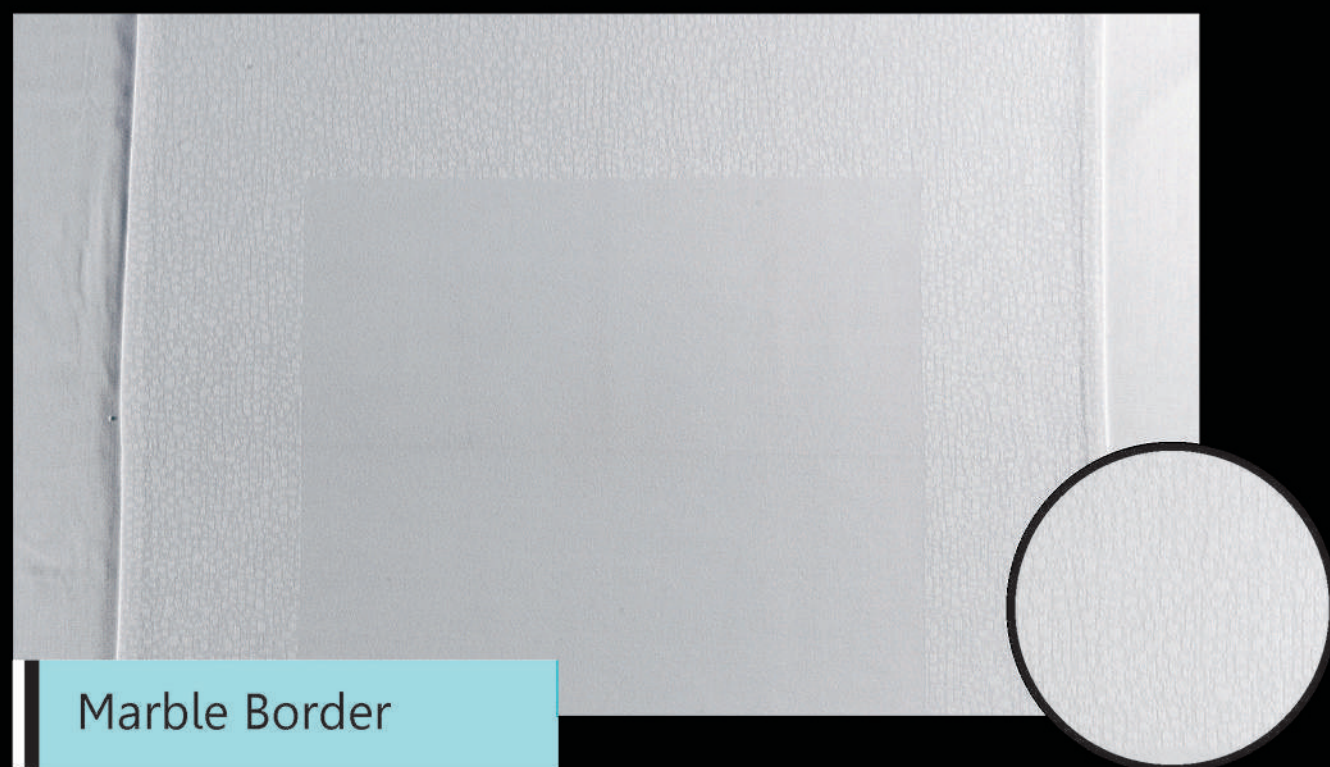
Grape Wine

100% Cotton



Stripe Border

100% cotton



Marble Border

100% Cotton



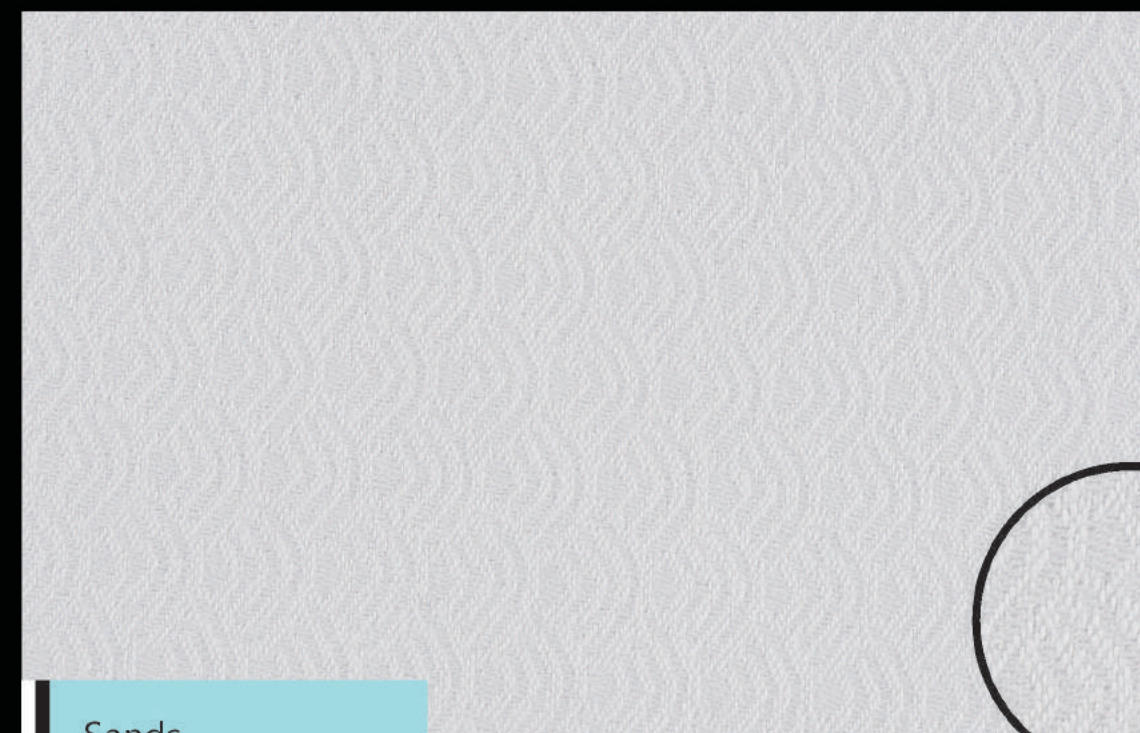
French Window

100% cotton



Greek Window

100% Cotton



Sands

100% Cotton



Stripe Window

100% Cotton



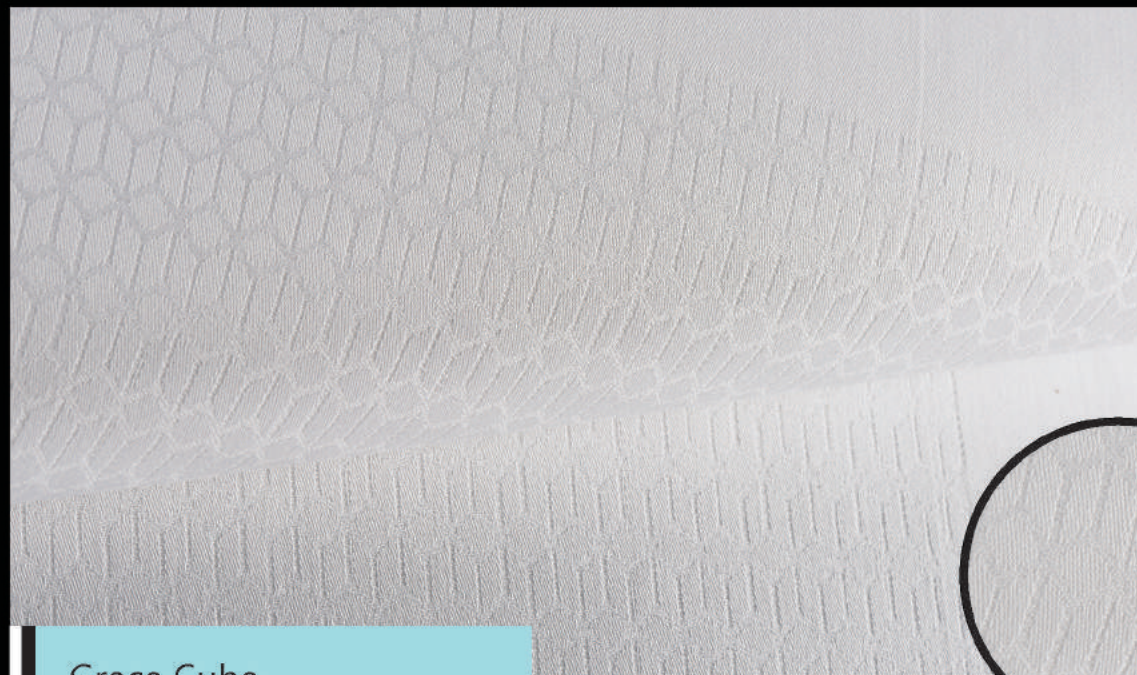
Persian

100% Cotton



Grace Pyramid

100% Cotton

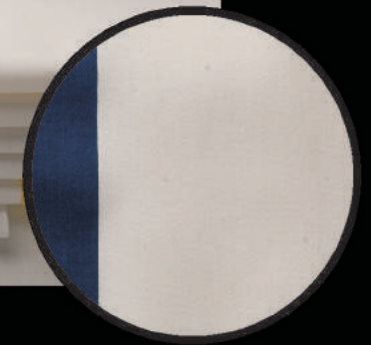


Grace Cube

100% Cotton



Wiping & Glass Cloth



DESIGNER CHAIR COVER



Cheetah



Plain



Rose



Flower

Bows



Arch



Tie Back



Cross



Jacket

Bar Table



Frill With Clip



Fitted Table Cloth



Moulton



BEEPEE Wonder Moulton - The Table Protector

The Indigenously Developed quality has very soft handfeel so the guests do not feel the hardness of the table. Its Absorbs 60% more sound than the average used Moulton

It has excellent durability and genuinely protects the table from getting spoilt. 100% washable Beepee Moultons are genuinely wonderful accessory to save the expenditure to save the expenditure of the hotels and resturants as very reasonably priced

Airlines

Cruise

Hospitals



Airlines



OUR RANGE FOR AIRLINES

- Bedsheets
- Duvets
- Pillows
- Duvet Covers
- Pillow Covers
- Mattresses
- Napkins
- Table Cloth
- Tray Mats
- Trolley Covers
- Cart Covers
- Headrest Covers
- Blankets

Airlines

Cruise

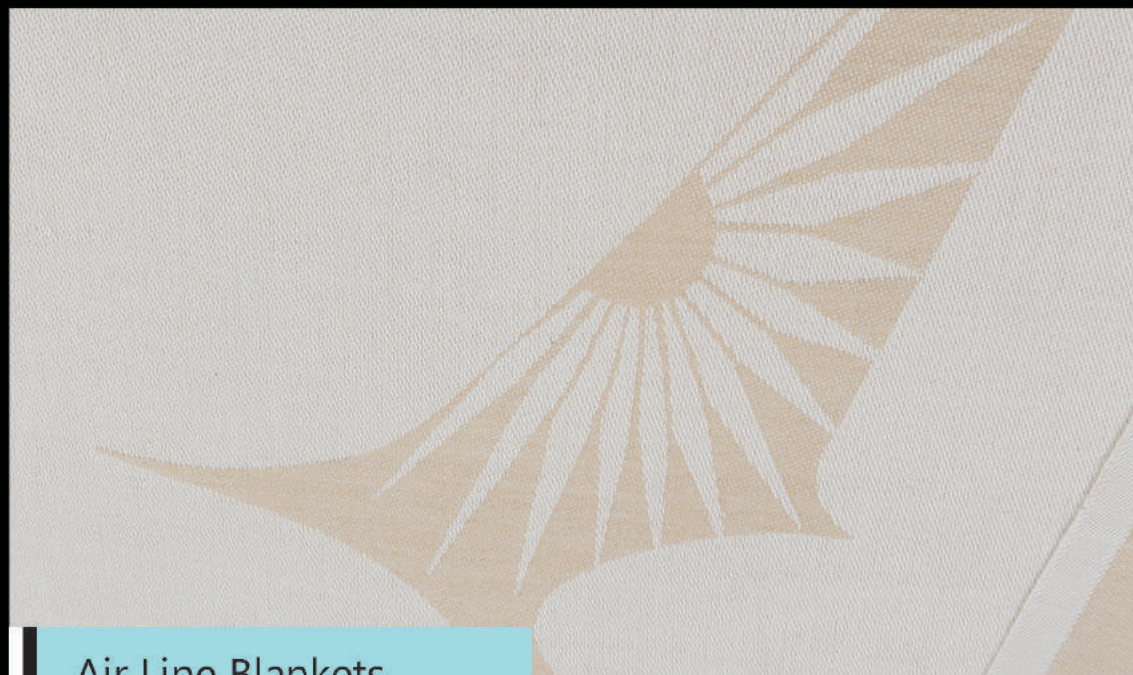
Hospitals



Jacquard - Printing & Embroidery



Air Line Duvet



Air Line Blankets

100% Polyester MOD acrylic Poly viscose Poly acrylic



Air Line Mattress

Special with seatbelt opening

Air Vistara



Yemenia

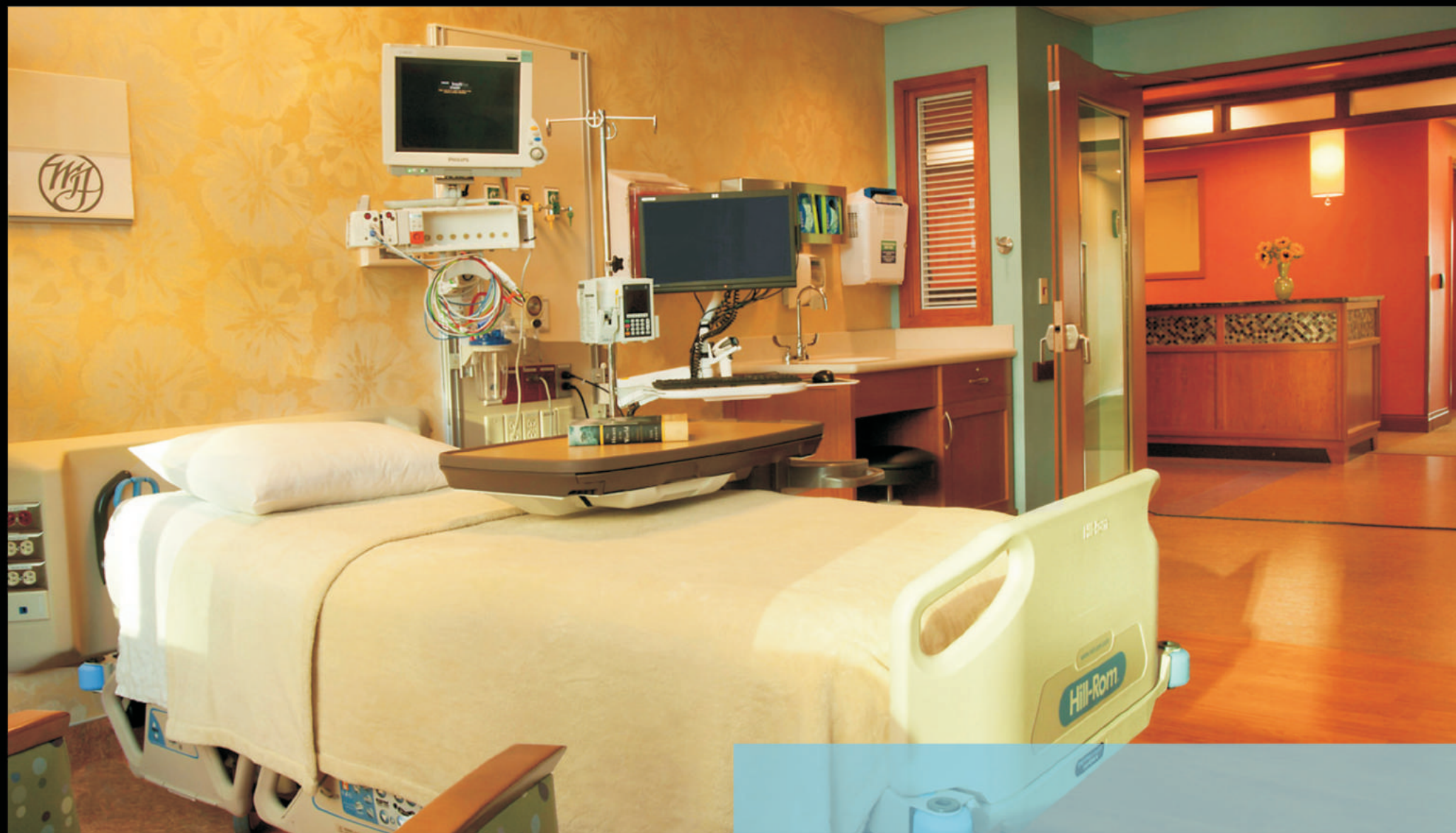


Kenya



Kuwait





Hospitals

OUR RANGE FOR HOSPITALS

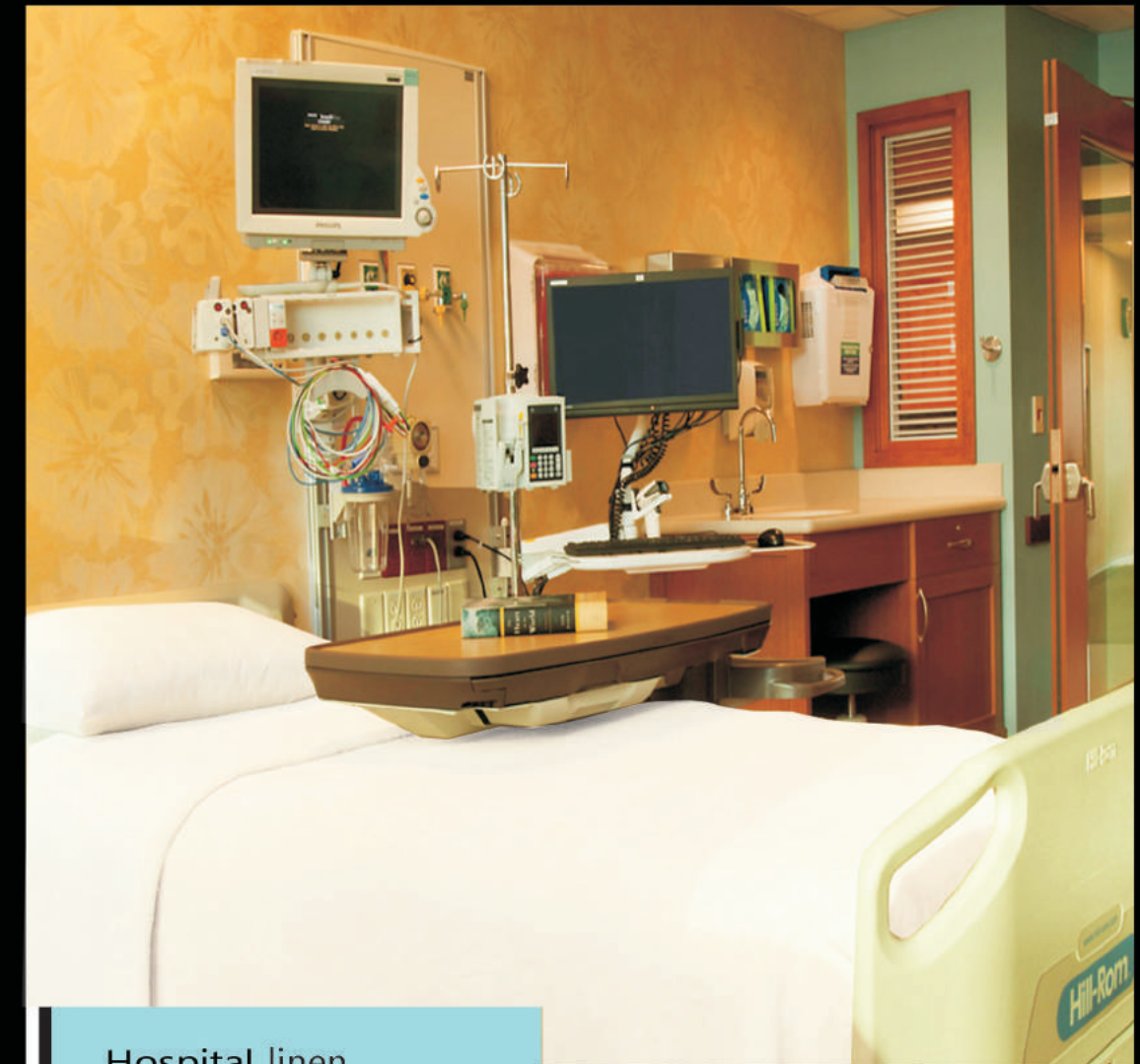
Bed sheets
Duvets
Pillow
Napkins



Hospitals



Scrub



Hospital linen

Specially Grace bed linen
Polycotton bed linen & 100% Cotton bed linen

| Ordering Linen |

The requirement of linen is normally calculated by considering one's daily use, use on shelf and laundry cycle. Napkins requirements should always be 5 times the table cloth of course this is only a suggestion, your needs could vary as per the actual experience. Remember to allow at least 24 hours of shelf life of all items to improve the flat dry appearance and to "rest" the fabric

Table Cloth

No. of Table 50
Turns per day 2.5
One day use 125
Times 4 days use 500

Napkins: 5 Times the amount of tablecloths is recommended i.e. 500 x 5 = 2500 Napkins

How to measure special sizes

Square or rectangle Table

1. Measure the table e.g. 36 x 96"
2. Figure the amount of drop (or drape) you would like from the edge of the table, this is matter of preference. Generally, the longer the drape, the more formal the service. A 12" to 15" drop is usually sufficient. A formal drop is 30"
3. Double this drop number (i.e. 15" x 2 = 30) and add this to the table width measurement (i.e. 36" + 30" = 66")
4. Find the closet standard width fabric available (standard fabric widths are 60", 90", and 120"). Subtract the table width from the fabric width and divide by 2 to find the drop that width would give you.

Example:

60" 90"
-36" -36"

24/2 = 12" drop 54/2 = 27" drop

5. Determine which of these drops is appropriate for you and add double this drop to the length of the table.

Example:

12" 30"
x2" x2"

24 + 96 (table length) = 120" 60 + 96 (table length) = 156"

6. The exact tablecloth size for this 36 x 96" table is either 60 x 120" or 60 x 156", 120", (width drops and length drops do not necessarily have to be exactly the same.. e.g 10" width drop and 12" length drop is acceptable)

Table

Height = 29 to 31 inch
Depth of each place setting

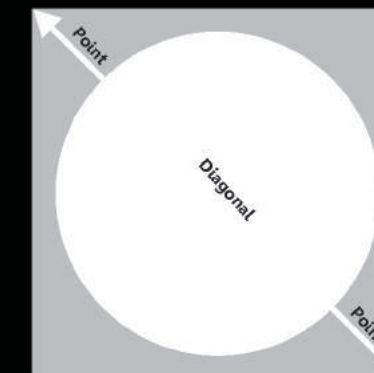
(Measure from the edge of the table in front of the dinner, toward the middle) = 14" minimum)

Placesetting minimum width

Alsle Minimum width

Fine dining 27"
Normal 24"

Occasional Service 30"
Regular Service 36"



Round Tables Using Square Cloths

1. Measure the diameter of the round table e.g. 36"
2. Subtract the table diameter from an appropriate square tablecloth diagonal (See chart for standard squares diagonal)

Example:

90.5" (diagonal of 64 x 64")
-36" (table diameter)
54.5" + Total point (the corner of the tablecloth) drop off table

3. Divide this point drop by 2 to determine the drop of all four corners of the table.

Example:

54.5" / 2 = 27.25" drop

Note: This point drop should not exceed 28" since a standard table height is 30". The drop on the sides of the table is to determine the same as "A" above (i.e. 64" -36" = 28"/2 =14" drop)

Formula: Diagonal of cloth - Diameter of table/2 = Length of drop of points

Size Diagonal

45 x 45"	63.6"
54 x 54"	76.4"
64 x 64"	90.5"
72 x 72"	101.8"
81 x 81"	114.6"
90 x 90"	127.3"

A round table with a diameter of 60" or 66" takes an 81" x 81" square table cloth

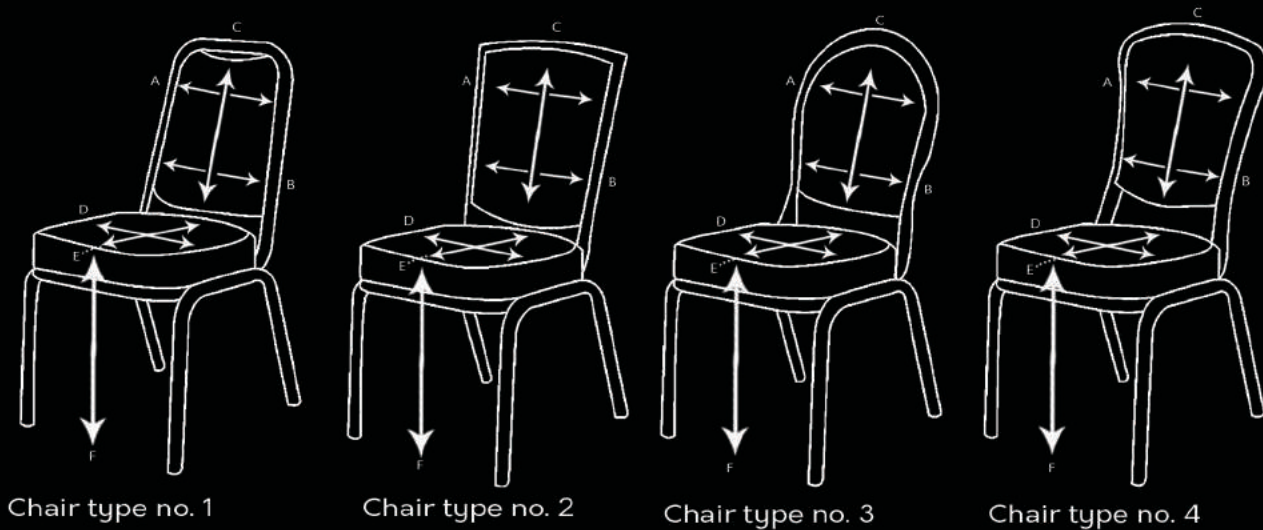
A round table with a diameter of 72" takes a 90" x 90" square cloth

Sizing Things Up

Tablecloth Size		Table Shape	If your table Measure	Diameters of round tables		
Full Drop	Half Drop			For Round Table	Half Drop	Full Drop
90x90"	60x60"	■	28 x 28" to 30 x 30"	32"	60"	92"
90x90"	64x64"	●	36" diameter	40"	70"	100"
90x108"	60x78"	■	30 x 48"	50"	81"	110"
100x100"	70x70"	■	36 x 36" to 40 x 40"	60"	90"	120"
120"x120"	81x81"	●	60" diameter to 66' diameter	72"	108"	132"
90x132"	60x102"	■	30 x 72"			
A table size	82x82"	■	48 x 48" to 52 x 52"			
132x132"	90x90"	●	72" diameter			
100x132"	70x100"	■	40 x 72"			
100x156"	70x126"	■	40 x 96"			
100x180"	70x150"	■	40 x 120"			

Measuring Chair cover

- Please mark the chair which comes closest to your model and fill in the requested dimensions.
Also send us a picture of your chair itself in order to produce a customized cover accordingly.
- Select The Model



Chair Type No.

- | | | |
|---------------------------------------|----|----------------------|
| A) Width of the back rest from top | cm | <input type="text"/> |
| B) Width of the back rest from bottom | cm | <input type="text"/> |
| C) Height of the back rest | cm | <input type="text"/> |
| D) Width of the seating area | cm | <input type="text"/> |
| E) Depth of the seating area | cm | <input type="text"/> |
| F) Height from seating area to floor | cm | <input type="text"/> |

Measuring Cocktail table cover

- Please note the cocktail table which comes closest to your model and fill in the requested dimensions.
Also send us a picture of your cocktail table itself in order to produce a customized cover accordingly.
- Select The Model

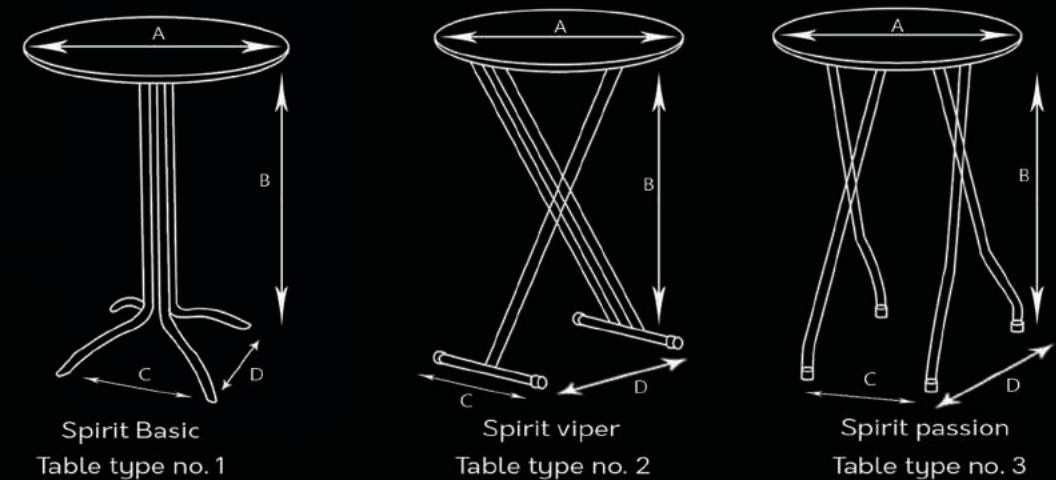


Table Type no.

- | | | |
|------------------------------|----|----------------------|
| A) Diameter of the table top | cm | <input type="text"/> |
| B) Height of the table | cm | <input type="text"/> |
| C) Width of the feet | cm | <input type="text"/> |
| D) Depth of the feet | cm | <input type="text"/> |

| MANUFACTURING IN PROCESS |



| Some Of Our Satisfied Valued Customers |



OUR FOOT PRINTS



beepee group

Corporate Office:

A-904 Innova Marathon Nextgen, Off G K Marg, Lower Parel West, Mumbai - 400013, India

Tel: 91-22-611-666-66 (100 Lines) | Fax: 91-22-611-666-00

email: sales@beepeegroup.com | website: www.beepeegroup.com

Dubai Office: P.O. Box No. 2424584, Shop No. 2, Bahzad Building, Bur Dubai, UAE

Mobile No. +971 529218455 email: mukul@beepeegroup.com

